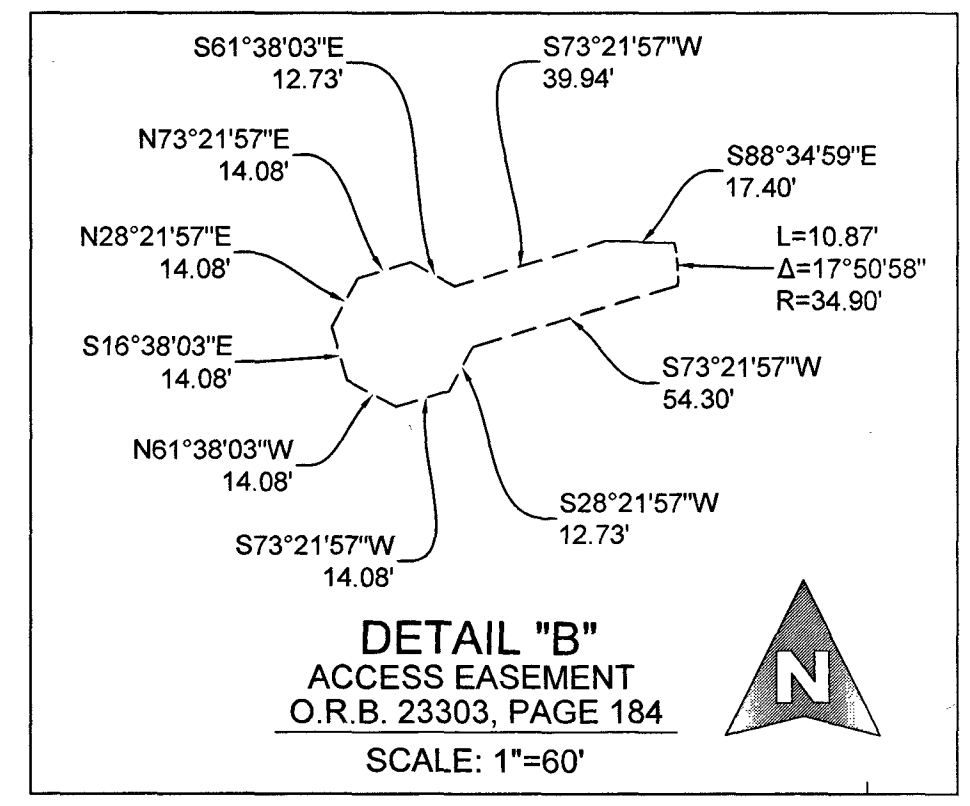
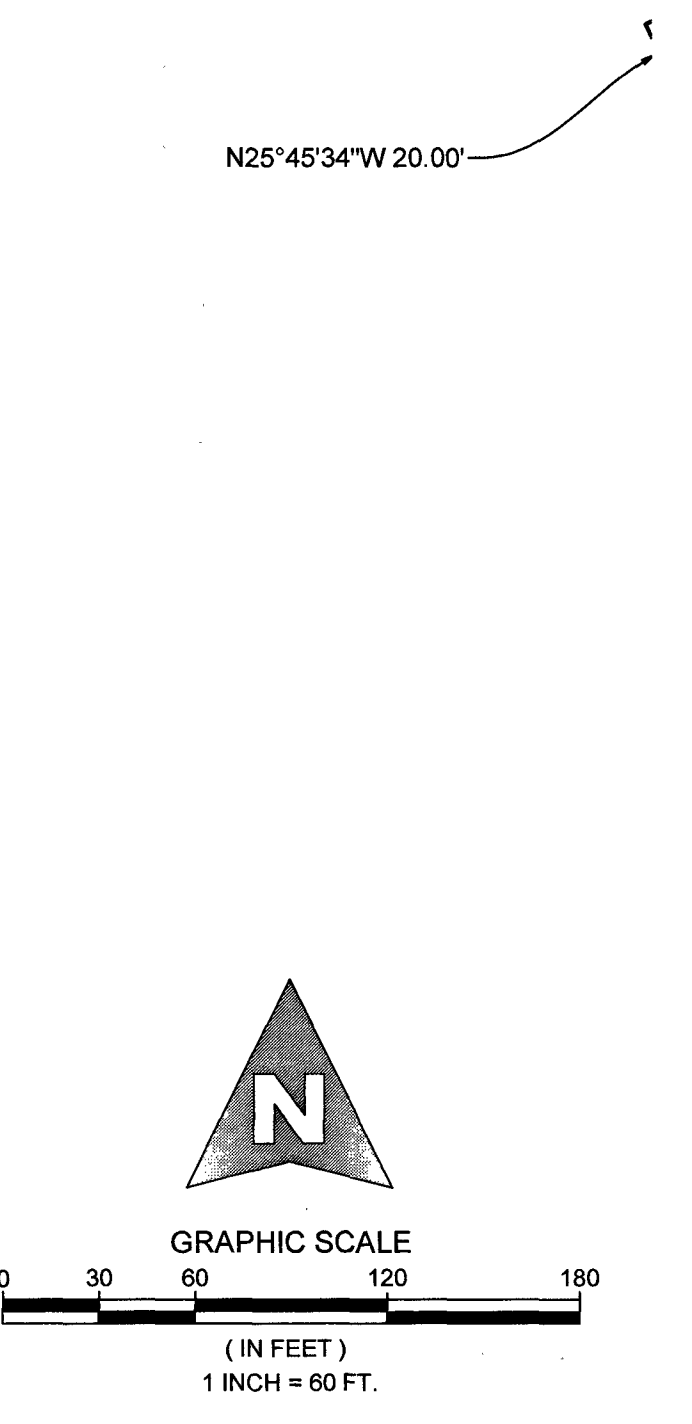
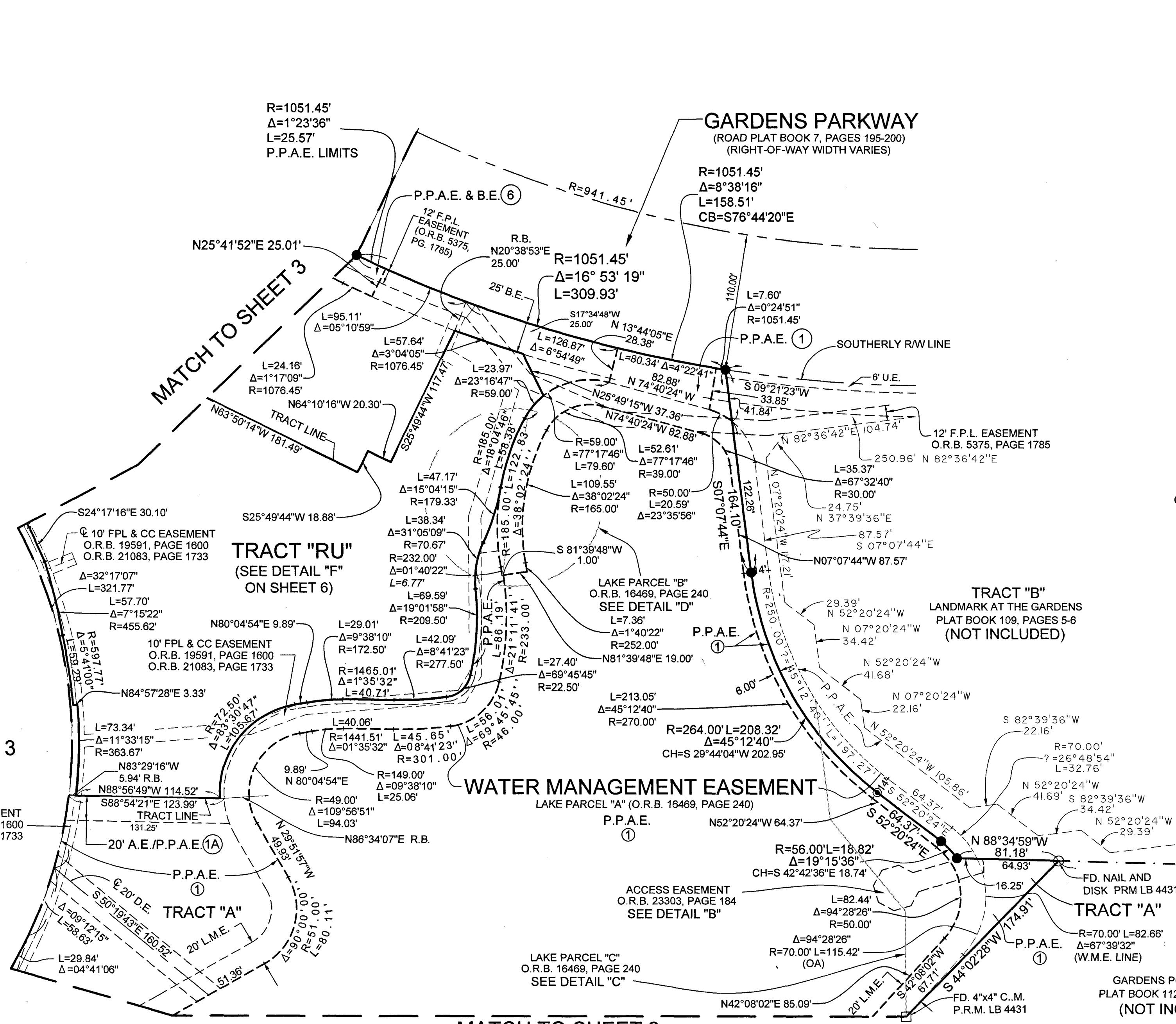
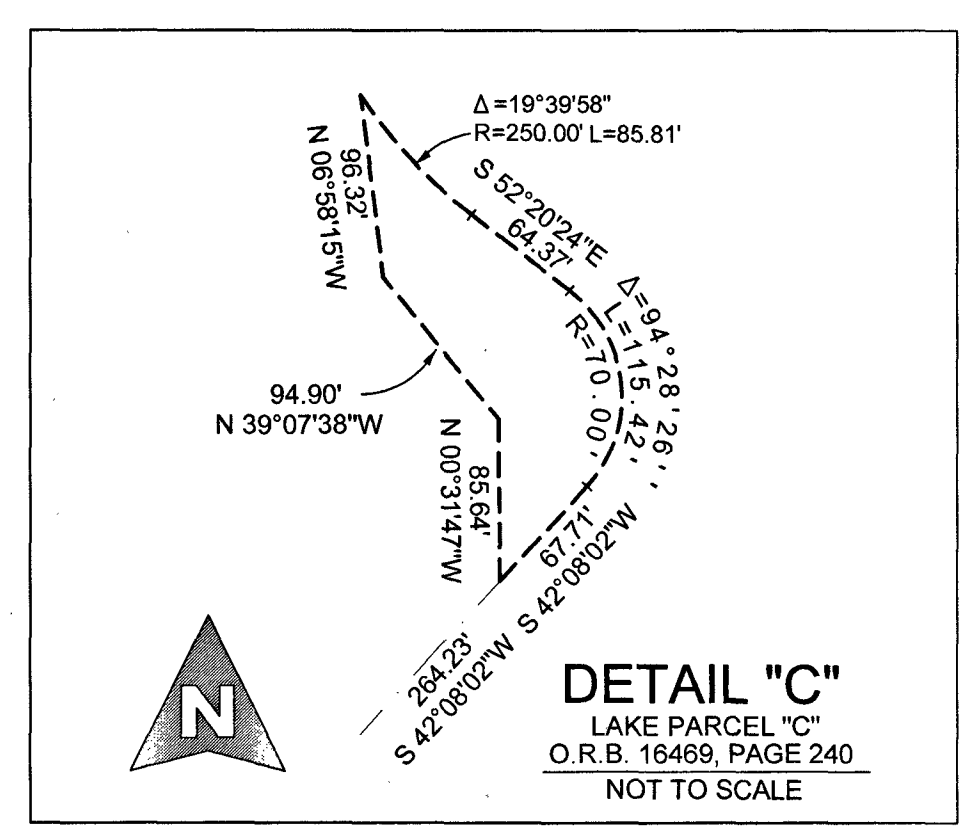
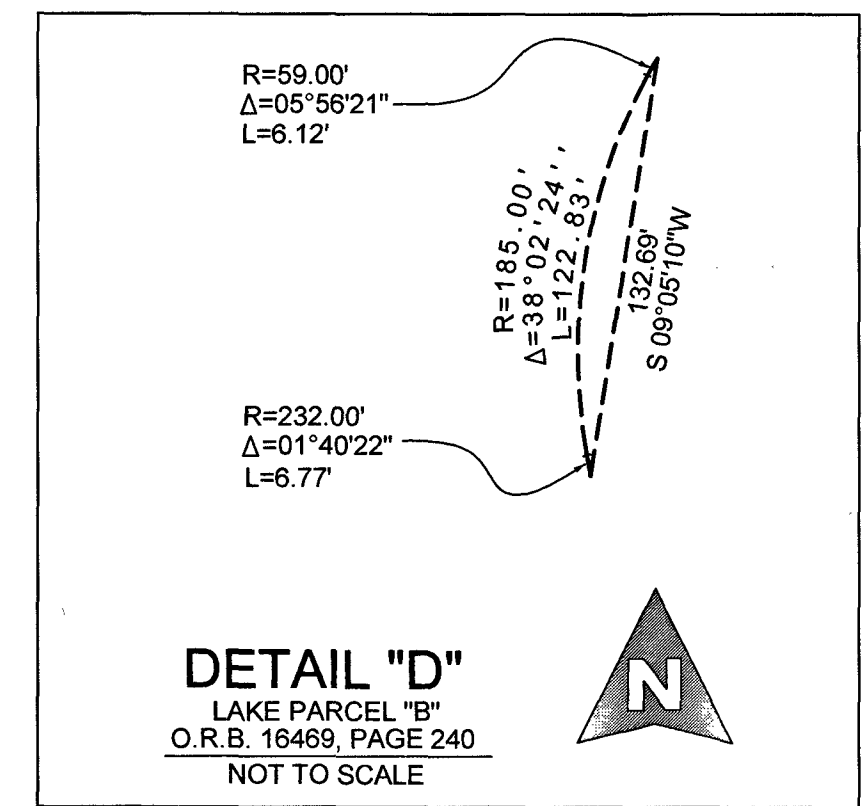
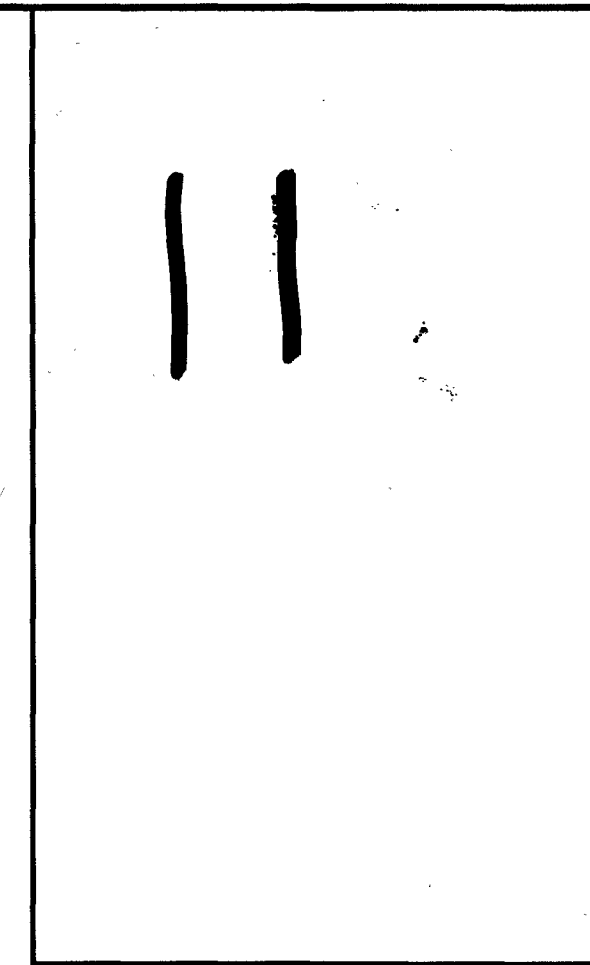


# DOWNTOWN PALM BEACH GARDENS

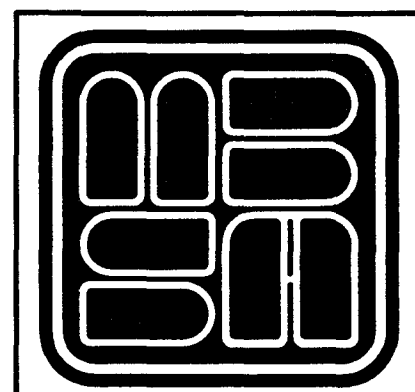
LYING IN SECTION 6, TOWNSHIP 42 SOUTH, RANGE 43 EAST, CITY OF PALM BEACH GARDENS, PALM BEACH COUNTY, FLORIDA, BEING A REPLAT OF ALL OF DOWNTOWN AT THE GARDENS, AS RECORDED IN PLAT BOOK 118, PAGES 130 THROUGH 133, PUBLIC RECORDS OF PALM BEACH COUNTY, FLORIDA.



(AREA TABULATION (P.P.A.E. 1-9))

①/①A	= 13.75	ACRES
②	= 2.14	ACRES
③	= 1.04	ACRES
④	= 0.33	ACRES
⑤	= 0.90	ACRES
⑥	= 0.49	ACRES
⑦	= 0.33	ACRES
⑧	= 0.86	ACRES
⑨	= 0.27	ACRES
TOTAL	= 20.11	ACRES

(P.P.A.E. ② = LAKE VICTORIA GARDENS AVE.)



**MICHAEL B. SCHORAH & ASSOCIATES, INC.**  
 1850 FOREST HILL BLVD., SUITE 206  
 WEST PALM BEACH, FLORIDA 33406  
 EB# 2438 TEL. (561) 968-0080 FAX. (561) 642-9726 LB# 2438

DOWNTOWN  
PALM BEACH GARDENS